

# Information of computer consultation event

We hold individual computer consultation event to utilize your own device educationally. You can get helpful information of using computer at Tohoku university. Please join if you have anxiety of computer settings.

## Date/detail

From 9/27 (Mon.) to 10/15 (Fri.)  
9:30~11:00 and 13:30~16:00



- How to access campus Wi-Fi service
- How to attend a online lecture
- How to set Email service for Students (DCMail)
- How to set security software
- How to set Microsoft Office 365 ProPlus



## Venue

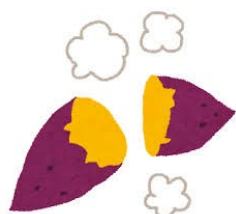
Kawauchi-Kita campus Multi-media educational research center 1F M1 O3



## How to join

- You don't have to apply in advance.
- If many people attend this event, there are case that we offer other day.

## Belongings



- Student ID card
- Notice about tohokudai ID confirm page/tentative ID+password
- Please bring your computer with full charged and initial-set. There are details on another side of this paper.

CDS

東北大学  
データ駆動科学・AI教育研究センター  
Center for Data-driven Science  
and Artificial Intelligence  
Tohoku University

### Contact

Multi-media educational research centerM507  
022-795-7622  
tech-staff@cds.tohoku.ac.jp

2021.8.31



# Before attending computer consultation event

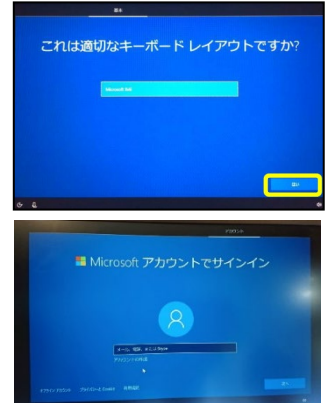


①Please attend this event after easy settings.

## < Operating procedure >

- Turn on your computer and set your computer to display desktop screen.

1. After turning on your computer, "Welcome" screen is displayed.
2. Select your region.
3. Select "Microsoft IME" then click "yes"  
Please skip setting of second keyboard layout.
4. You will be recommended to create Microsoft account, but please set local account(off-line account)
5. Please follow display instructions.  
Setting is complete when your computer display desktop screen.



**Do not forget password you set. Not to forget, take notes of your password.**

There are not efficient charging spot. So please attend this event with full-charged computer.

②Do not forget bring these things:

- Student ID card
- Notice about tohokudai ID confirm page/tentative ID+password
- Your computer (Please bring your computer with full charged and initial-set.)

